

INDOFIL – Special offerings for Technical Textiles

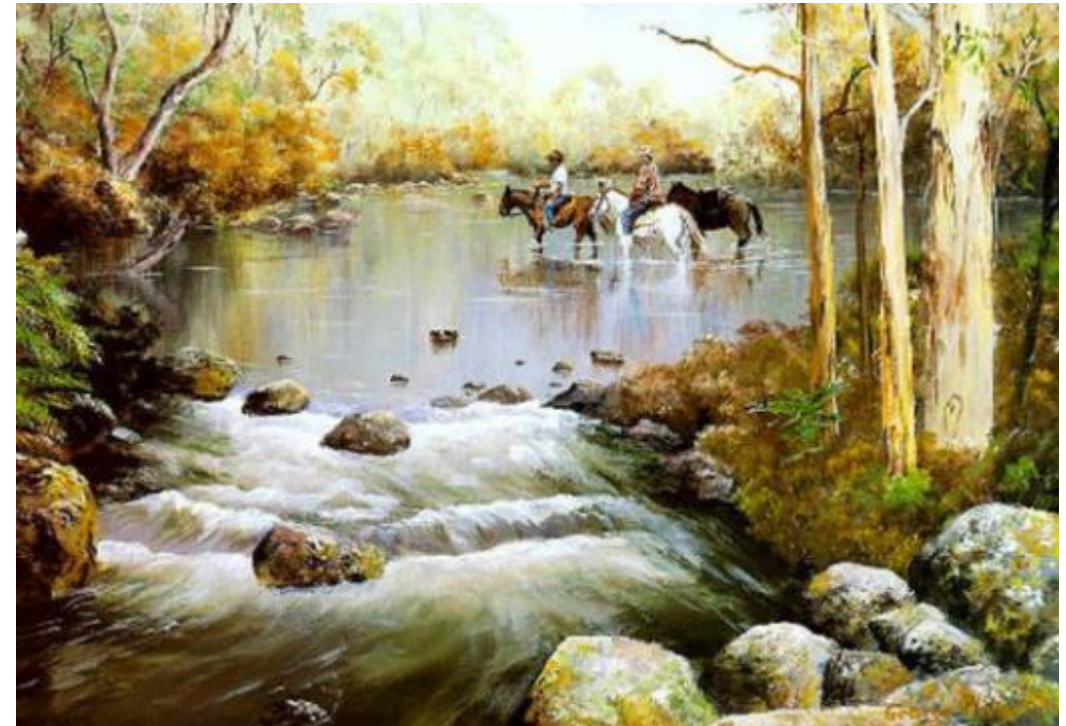


PRINT MEDIA INK RECEPTIVE TOP LAYER

INDOFIL MFC is a waterbased, ready to use, customized compound designed for top coating application by direct coating methods on textile and paper substrates that are subsequently used for inkjet printing using water based inks. INDOFIL MFC has been specially designed to provide a high quality digital print image with a matte finish with soft handle that gives better performance in fast drying of ink, sharp image quality and better water resistance.

ADVANTAGES

- It will result in sharper & better defined images
- High colour brightness & yield
- Compatible with water-based ink jet inks
- Excellent water fastness
- Soft handfeel when used on coated textiles
- Precise absorbency after coating
- Matt finish surface



INDOFIL HA SCPC – Semi Conductive Coating



Indofil HA SCPC is used in semi-conductive coating applications. A conductive textile is a fabric which can conduct electricity. Conductive fabrics consist of a non-conductive or less conductive substrate, which is then either coated or impregnated with electrically conductive elements.

ADVANTAGES

- Single shot compounded product
- Easy to prepare & use
- Good electrical conductivity (< 2000 ohms)
- Long term stability
- Easy modification
- Reproducibility
- Excellent coverage due to optimized Rheology



Applications

- Power cables: Semi-conductive cable wraps.
- Conductive gloves
- Printed batteries
- Military, national security & aerospace: EMC products
- Aerospace applications

Battery Gauntlets - INDOFIL HA 500

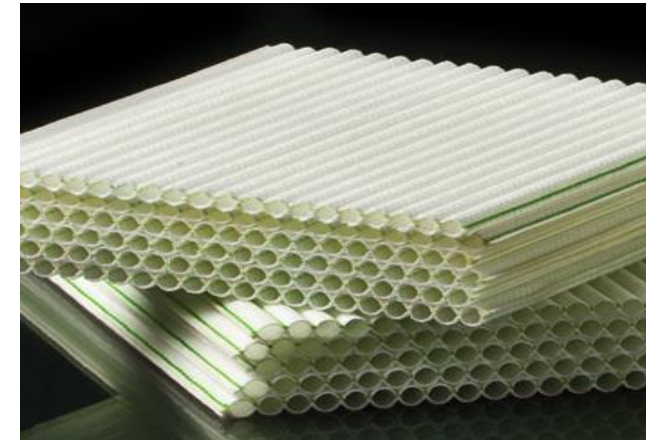


INDOFIL HA 500 is thermoplastic acrylic dispersion used in applications where an extremely firm, resilient, durable binder is needed. It has high resistance to acids and electrolytes. This aqueous, all-acrylic emulsion also has excellent resistance to yellowing at high temperatures. Its outstanding mechanical stability improves sprayability and ensures even resin distribution and penetration.

ADVANTAGES

In summary, the features of INDOFIL HA 500 are:

- High tensile strength
- Resiliency
- Outstanding mechanical stability
- Firm handle
- Excellent resistance to yellowing
- Low Electrical resistance
- High porosity, greater absorbency of the fabric wall



Foam Black/Dim Out Coating - INDOFIL HA BOFC



Crushed-Foam Coating: Blackout Curtains

Base-coat
Middle-coat (pigmented)
Top-coat

Very soft, resistant to dry-cleaning and washing

ADVANTAGES

- Single shot compounded product
- Easy to prepare & use
- Non sticky surface with softer handle
- Excellent durability
- Enables higher speed
- Good crack resistance
- 100% light blocking with low add-on

Our Offerings:

- INDOFIL HA BOFC

Applications

Hospitals use blackout curtains between patient beds to maintain privacy.

Photographers use blackout curtains all the time in their studios.

Scientific laboratories and reptile rooms use blackout curtains to block all the sunlight.

Sleep clinics use blackout curtains in their rooms to manipulate the lighting.

Black/Dim Out Roller Blinds

ADVANTAGES

- Customers can generate different formulation based on the end requirements.
- Easy to prepare & use
- Non sticky surface with firm handle
- Excellent durability
- Complete light blocking
- Excellent UV resistance
- Non yellowing at high temperature & exposed to sunlight

Paste Coating:

Blackout blinds

Base-coat

Middle-coat (pigmented)

Top-coat

Resistant to dry-cleaning and washing



Our Offerings:

- INDOFIL HA 16
- INDOFIL HA 26

Vertical & Roller Blinds



ADVANTAGES

- Excellent resistance to yellowing
- Stiffness with flexibility
- Good filler loading
- Good UV resistance
- Resiliency
- Outstanding mechanical stability
- Firm handle

Liquor Padding:

Vertical Blinds and Roller Blinds

Stiffening compound

Heat-sealable compound for simultaneous coating and pigment dyeing

Our Offerings:

For Vertical Blinds

- INDOFIL HA 16
- INDOFIL HA 30

For Roller Blinds

- INDOFIL HA 24

ASPERA WR 100 – Water Repellent Finish & Proofing



Properties:

- Antifrying (thread blocking)
- Waterproofing
- Structural Stability

Our Offerings:

- Binders
 - INDOFIL SVM 49/HA 8 (I)
 - INDOFIL HA 26
 - ASPERA PU W3000
- C8 – Aspera WR 120
- FF – Aspera FF WR



- **Clothing**
 - Rainwear
 - Sports and leisure wear
- **Industrial textiles**
 - Uniforms
 - Carpet goods
 - Filter fleece
 - Protective clothing
- **Home textiles for exterior**
 - Awnings
 - Tent fabrics
- **Home textiles for interior**
 - Upholstery fabric
 - Tablecloths
 - Curtains
 - Wallpaper
- **Luggage Fabrics**

Automotive coating

Back coating used for automotive back coating applications which gives excellent thread blocking with soft handle.

flame retardant performance along with required coating effect. Coating can also be applied to other applications where flame retardant properties are required . It can also be formulated or diluted to various degree as per end requirements.

ADVANTAGES

- Compatible with FR products.
- Does not hamper FR properties & conforms FM VSS 302 test (with right FR additives)
- Soft handle
- Excellent strength of coated film
- Can be applied to various applications
- Very Good abrasion resistance
- Good flexibility

Our Offerings:

- INDOFIL K87 – for FR back coating applications
- INDOFIL HA 16 – For pile stabilization of automotive carpets



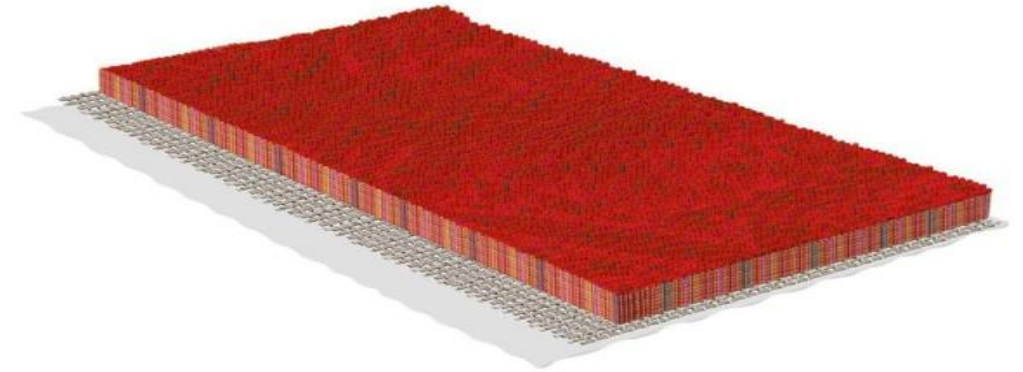
Carpet Back Coating - INDOFIL HA 600



Polymer dispersion used in the manufacture of floor coverings for bonding backings on to tufted carpets.

ADVANTAGES

- Low VOC and odour
- Excellent filler compatibility and compound stability
- Good wet delamination strength
- Dimensional stability
- Good softness & Flexibility
- Cut edge stability
- Anti skid property
- Excellent bonding strength



MDI type moisture curing binder for Rubber - ASPERA SLC



ASPERA SLC is a Polyol based Pre-polymer especially designed for the production of Rubber Tiles and Rubber crumb moulded or Adhesion Layer sports track fields. It is a low viscosity binder. It works on the principle of moisture curing along with pressure to cure rubber crumb to rubber and rubber to foam waste. Different pressure and Binder to Rubber ratio will lead to different density after curing.

ADVANTAGES

- Outstanding Adhesion to Rubber.
- Especially formulate with recycled rubber and for use in mould production.
- Excellent Flexibility.
- Anti Skid Property
- Excellent binding properties when mixed with resilient rubber granulated layers.
- Ecological, Uses re-milled granulated rubbers.
- Solvent free, low odour.

APPLICATIONS

- Door mats
- Animal Mats
- Railroad crossings
- Parking bumpers, wheel chocks, safety cone bases
- Wheelchair ramps



Coir Back Coating - INDOFIL HA SCM New



INDOFIL HA SCM New is acrylic latex with highly flexible handle and durable film properties. It has excellent bonding & mechanical properties. Indofil HA SCM New is used for good fiber bonding and dimensional stability

ADVANTAGES

- Cold crack resistance @ -12°C
- Excellent filler loading capacity
- Excellent tuft lock strength
- Excellent anti skid property
- Very Good abrasion resistance
- Shiny and hydrophobic film
- Good flexibility
- High tear strength
- Good release property
- Excellent bonding strength



Base cloth for Bitumen roof coating



ADVANTAGES

- Stiffening with good Flexibility
- Very low shrinkage (< 2%)
- Non yellowing at high temperature
- Stability at high temperature

Our Offerings:

- Indofil HA 20
- Indofil HA 881
- Indofil Fixer HP





ADVANTAGES

- High resistance to abrasion & impact
- Higher stiffness with reasonable flexibility
- Residual elongation should be zero.
- No pin holes on the fabric.
- Good bonding with MF resin.
- Should not be sensitive to moisture

Our Offerings:

- Indofil HA 20
- Indofil HA 8 I
- Indofil HA 16
- Indofil ASE60 TL
- Indofil 850 TL

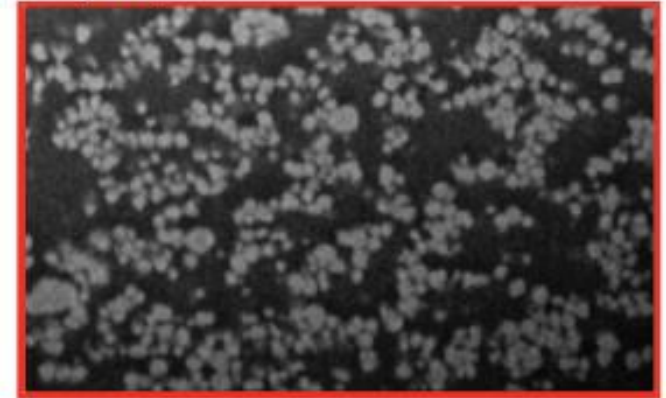


OPAQUE POLYMER – INDOFIL OPAQUE 621 TL

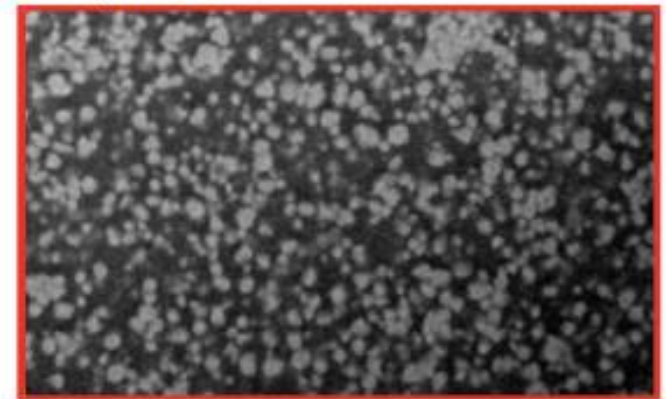
ADVANTAGES

- Indofil Opaque 621TL is hollow sphere polymeric pigment which reduces the cost of raw materials without compromising on performance properties.
- Indofil Opaque 621TL achieves the cost reductions by performing three functions
 - Improves the hiding efficiency of Titanium Dioxide by light scattering phenomenon and not by crowding the Titanium Dioxide particles
 - Allows formulations with equal resistance properties because of lower binder demand
 - Contributes directly to hiding

a - Regular TiO_2



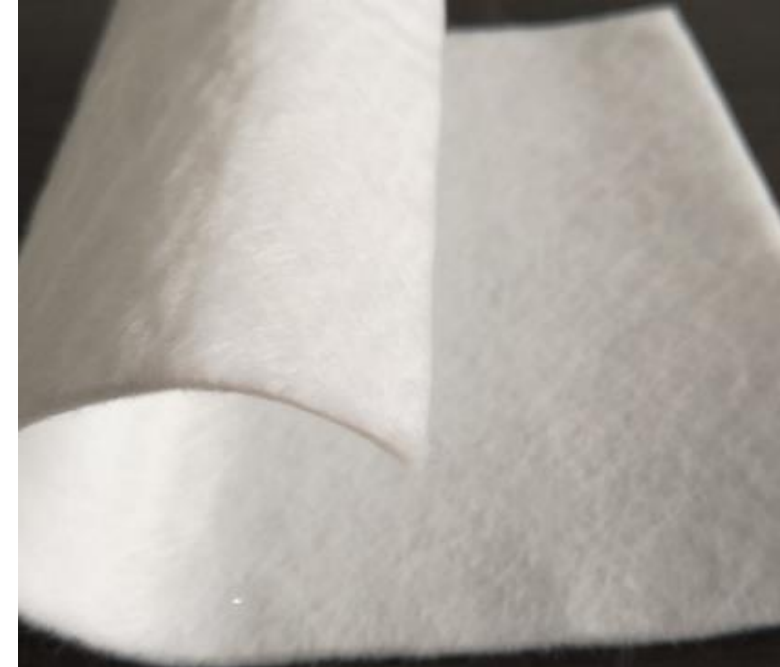
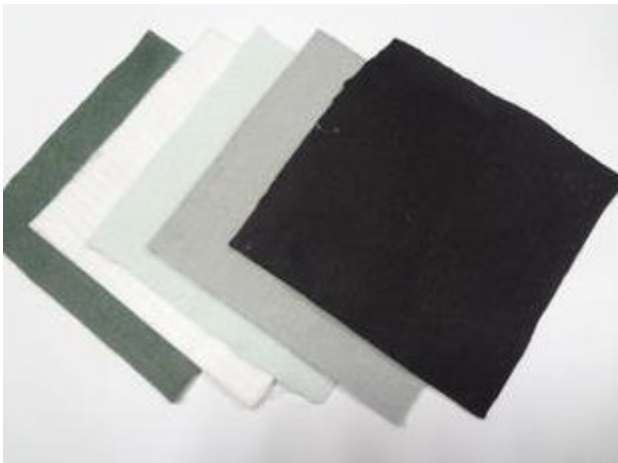
b - Composite TiO_2



Nonwoven Coating

ADVANTAGES

- Ease of handling
- Ease of application
- Polymer dispersions can readily be applied in combination with other additives.
- Excellent bonding & mechanical properties
- Durability to washing and dry cleaning
- Excellent adhesion to synthetic and natural fibers
- Imparts flexibility and resiliency



Our Offerings:

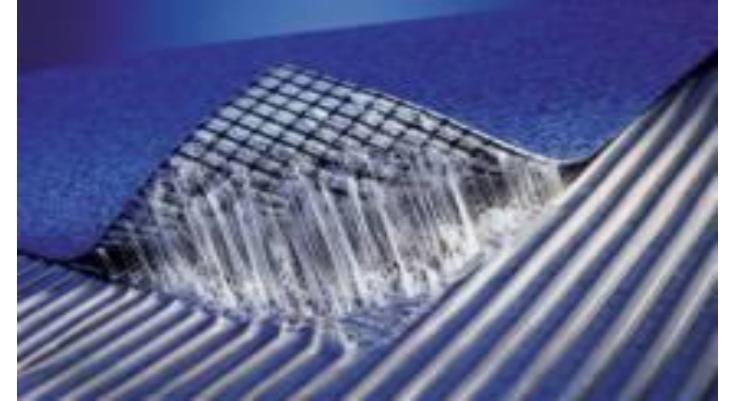
- Indofil HA 8 I
- Indofil HA 16
- Indofil HA 24

INDOFIL HA PFL – Fabric to fabric Lamination



Factors

- Adhesive –Chemical Type, Solids, Thickness, Viscosity, pH
- Required bond strength
- Bond durability
- Plasticizer migration (of PVC components).
- UV and light resistance (if applicable).
- Possible effect on appearance, e.g. discoloration of face fabric.



Thank You !

